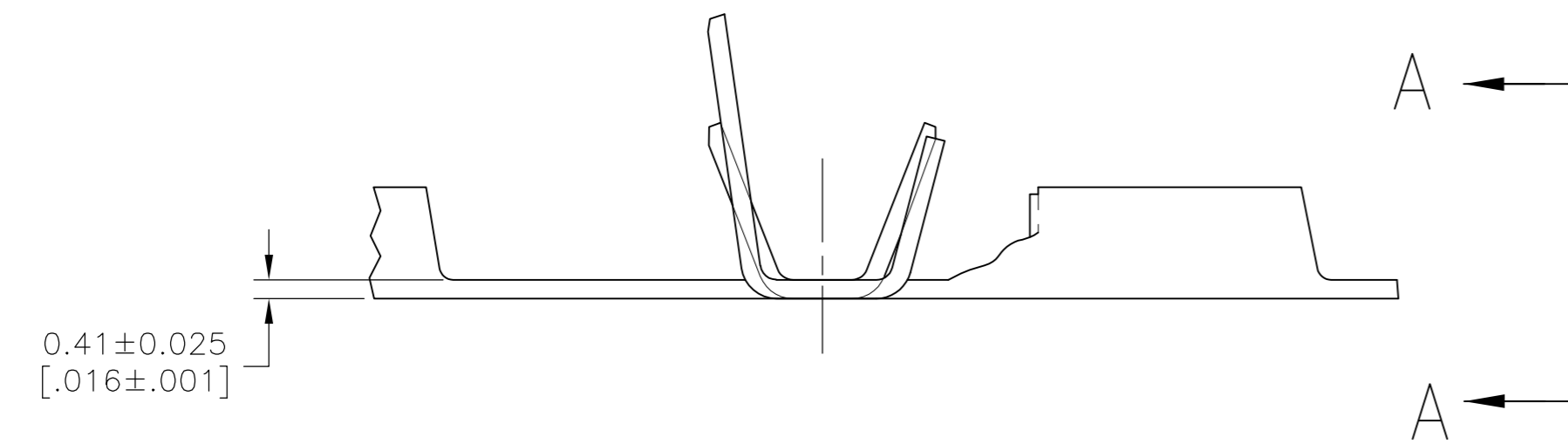
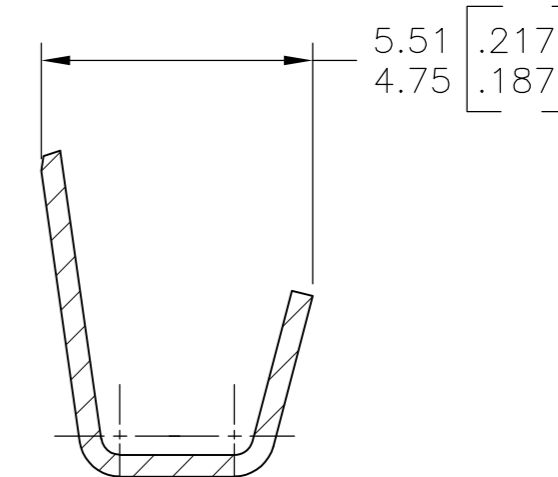
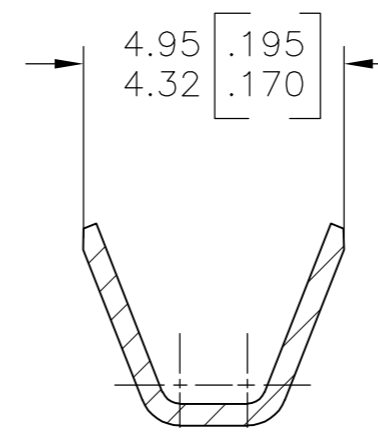
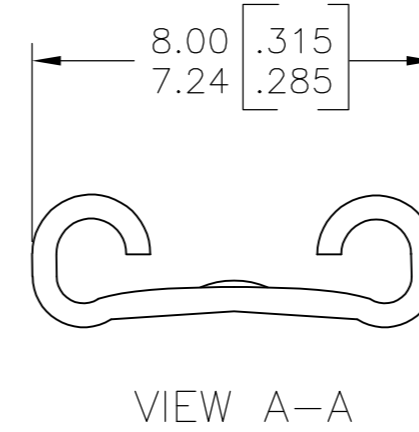
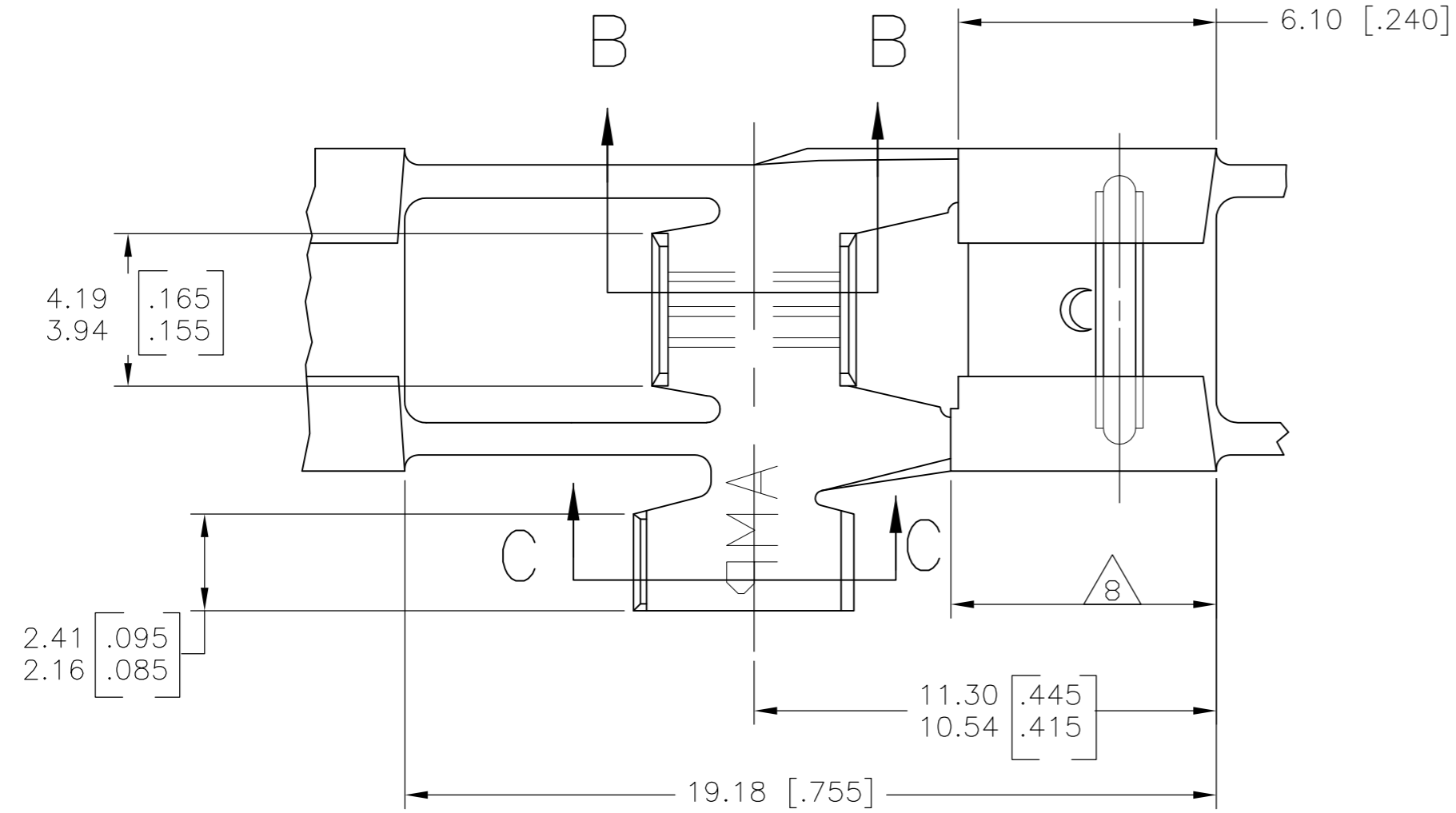


THIS DRAWING IS UNPUBLISHED. RELEASED FOR PUBLICATION
 © COPYRIGHT - By - ALL RIGHTS RESERVED.

LOC	DIST	REVISIONS					
AF	50	P	LTR	DESCRIPTION	DATE	DWN	APVD
		J		REVISED PER ECR-12-013459	27NOV2012	KH	PD

- 1 CONTINUOUS STRIP ON REELS.
- 2 MATING TAB THK TO BE 0.81 ± 0.025 [.032±.001].
- 3 WIRE SIZE IS #18-#14 AWG.
- 4 INSULATION RANGE IS 1.52-3.81 [.060-.150] DIA.
- 5 REEL WITH INTERLEAVING PAPER.
- 6 MATERIAL: BRASS
- 7 MATERIAL: HO4 PHOS BRZ
- 8 RECEPTACLE LENGTH CAN VARY UP TO 6.35 [.250] MAX, THIS SIDE ONLY.
- 9 PREPRODUCTION - FASR REQUIRED



PART NO.	WIRE		INSULATION DIAMETER (MAX)	WIRE BARREL CRIMP			TENSILE STRENGTH POUNDS	
	QTY	SIZE AWG		WIDTH	CRIMP HEIGHT	CRIMPER		ANVIL
63314-1	1	14	.150	.120	.071	F	FLAT	50
	1	16			.063			30
	1	18			.057			20

REVERSE REELED	MATERIAL	FINISH	PART NO.
5	7	SILVER	9 63314-5
	6	TIN	63314-4
	6	TIN	63314-2
	6	-	63314-1

THIS DRAWING IS A CONTROLLED DOCUMENT.

DIMENSIONS: mm [INCHES]	TOLERANCES UNLESS OTHERWISE SPECIFIED:	DWN: JR RUTH 6/16/87	TE Connectivity
	0 PLC ± -	CHK: MS FEHER 6/16/87	RECEPTACLE, FLAG, FASTON, 6.35 [.250] SERIES
	1 PLC ± -	APVD: C MEYERS 6/16/87	SIZE: A2 CAGE CODE: 00779 DRAWING NO: 63314
	2 PLC ± 0.25 [.010]	PRODUCT SPEC: -	RESTRICTED TO: -
	3 PLC ± -	APPLICATION SPEC: -	SCALE: 7:1 SHEET: 1 of 1 REV: J
	4 PLC ± -	WEIGHT: -	
	ANGLES ± -	CUSTOMER DRAWING	
	FINISH: SEE TABLE		